

Client: Northwest Peptides
support@northwestpeptides.com
www.northwestpeptides.com

Sample received: **12/15/25**
Analysis conducted: **12/29/25**

Compound:	KLOW Blend	CAS:	137525-51-0
Batch/Lot #:	KLOW-20251102	Formula:	C62H98N16O22
Appearance:	Blue lyophilized powder	Mol Wt:	1419.5 g/mol

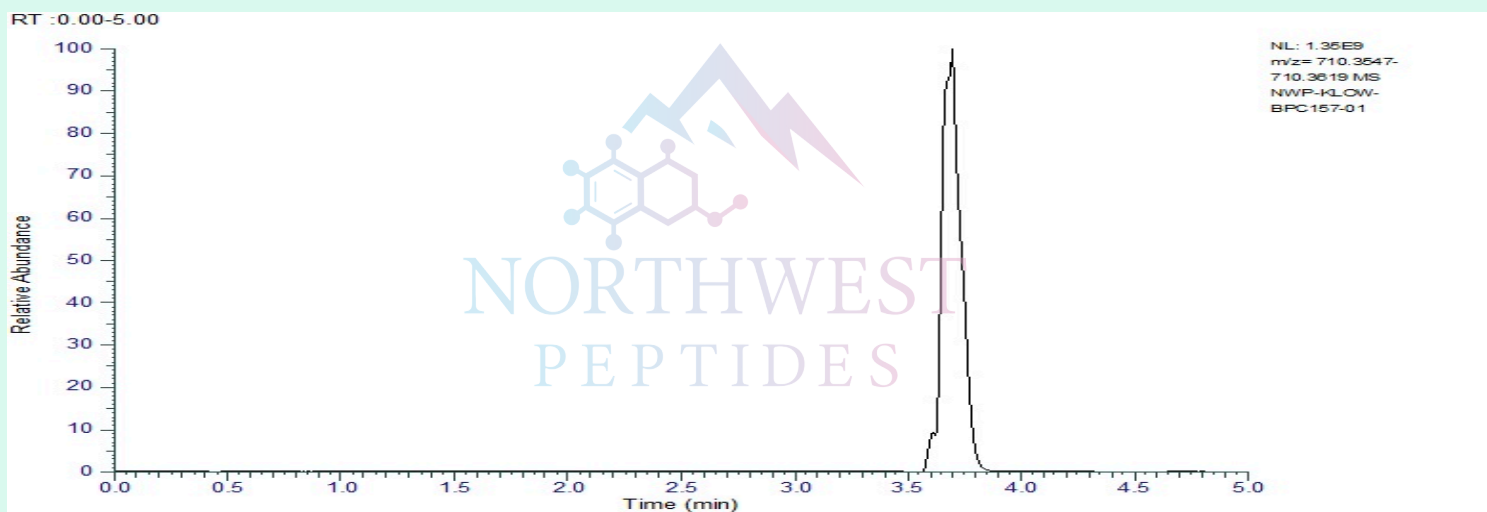
Method: by Ultra High Performance Liquid Chromatography with Mass Spectrometry with UV Detection

Pubchem CID: 9941957

[BPC 157](#) | [C62H98N16O22](#) | [CID 9941957 - PubChem](#)

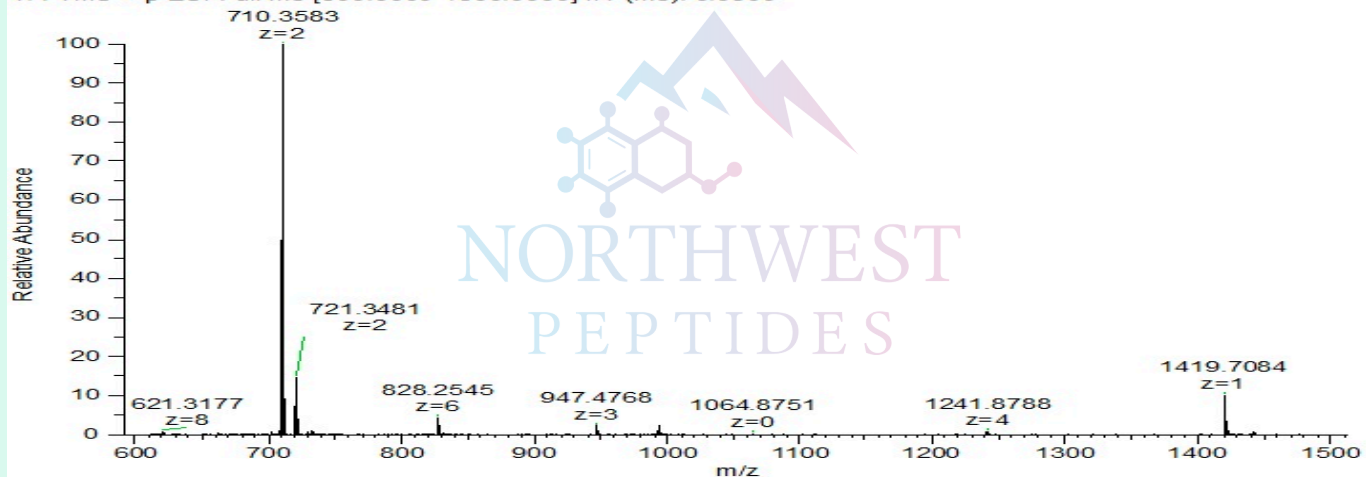
	Specification	Result	
Identity Test:	BPC 157	BPC 157	Conforms
Quantity:	10 mg ± 15%	10.43 mg	Conforms
Purity:	>99%	99.82%	Conforms

LC-MS Chromatogram: Retention Time and Peak Analysis



Full Scan Mass Spectrometry Analysis

NWP-KLOW-BPC157-01 #424 RT: 3.69 AV: 1 NL: 1.33E9
T: FTMS + p ESI Full ms [600.0000-1500.0000] IIT (ms): 0.0900



Analysis Performed by

Dr. Roberto Marin
Analytical Chemist
contact@bioregen.com

COA #11674
Security Key **NWPEPTIDES0**
bioregen.com/verify



Roberto Marin

Client: Northwest Peptides
support@northwestpeptides.com
www.northwestpeptides.com

Sample received: **12/15/25**
Analysis conducted: **12/29/25**

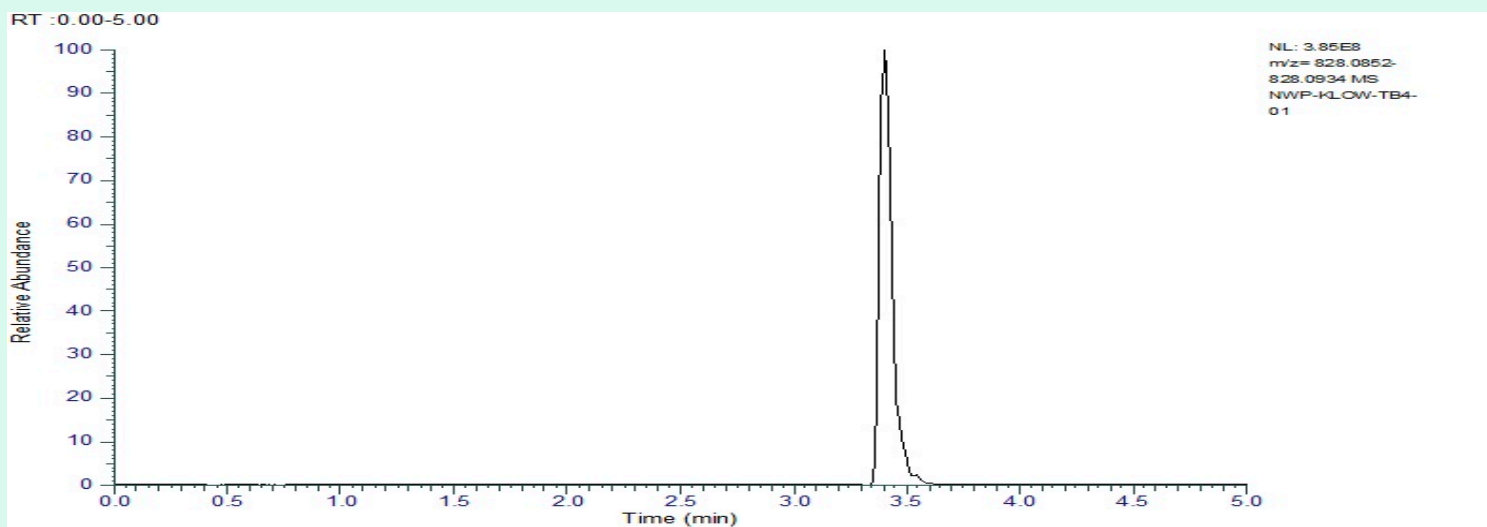
Compound:	KLOW Blend	CAS:	77591-33-4
Batch/Lot #:	KLOW-20251102	Formula:	C212H350N56O78S
Appearance:	Blue lyophilized powder	Mol Wt:	4963.0 g/mol

Method: by Ultra High Performance Liquid Chromatography with Mass Spectrometry with UV Detection

Pubchem CID: 45382195
TB-4|C212H350N56O78S | CID 45382195

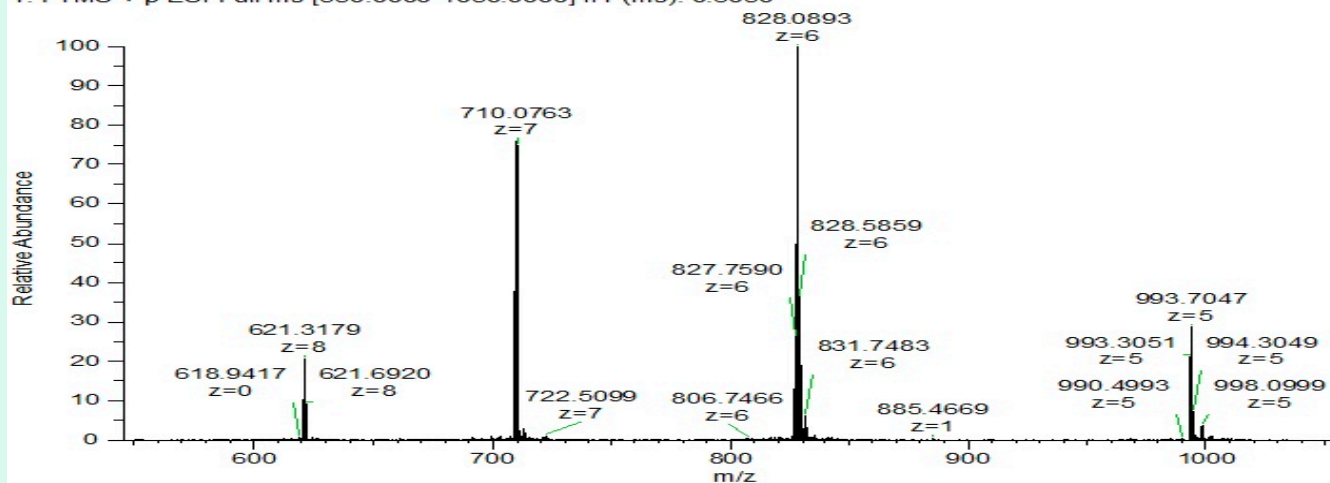
	Specification	Result	
Identity Test:	Thymosin Beta 4	Thymosin Beta 4	Conforms
Quantity:	10 mg ± 15%	9.80 mg	Conforms
Purity:	>99%	99.87%	Conforms

LC-MS Chromatogram: Retention Time and Peak Analysis



Full Scan Mass Spectrometry Analysis

NWP-KLOW-TB4-01 #391 RT: 3.41 AV: 1 NL: 3.85E8
T: FTMS + p ESI Full ms [550.0000-1050.0000] IIT (ms): 0.3050



Analysis Performed by

Dr. Roberto Marin
Analytical Chemist
contact@bioregen.com

COA #11674
Security Key **NWPEPTIDES0**
bioregen.com/verify



Roberto Marin

Client: Northwest Peptides
 support@northwestpeptides.com
 www.northwestpeptides.com

Sample received: **12/15/25**
 Analysis conducted: **12/29/25**

Compound:	KLOW Blend	CAS:	49557-75-7
Batch/Lot #:	KLOW-20251102	Formula:	C14H24N6O4
Appearance:	Blue lyophilized powder	Mol Wt:	340.38 g/mol

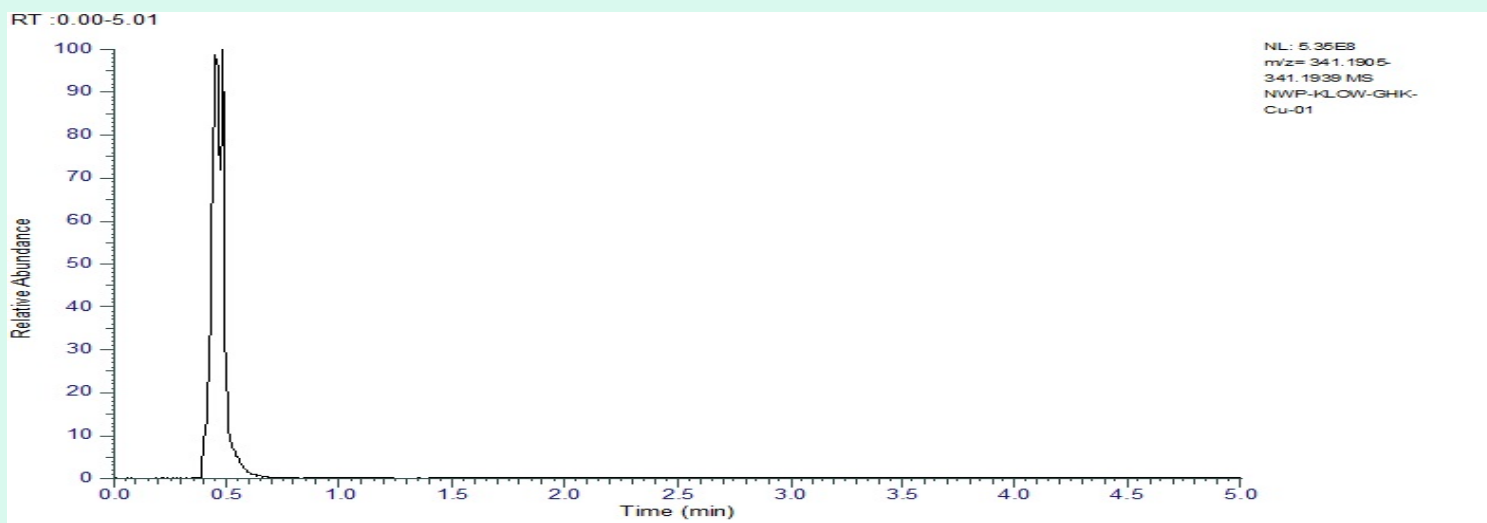
Method: by Ultra High Performance Liquid Chromatography with Mass Spectrometry with UV Detection

Pubchem CID: 342538

[GHK-Cu](#) | [C14H24N6O4Cu](#) | [CID 342538](#)

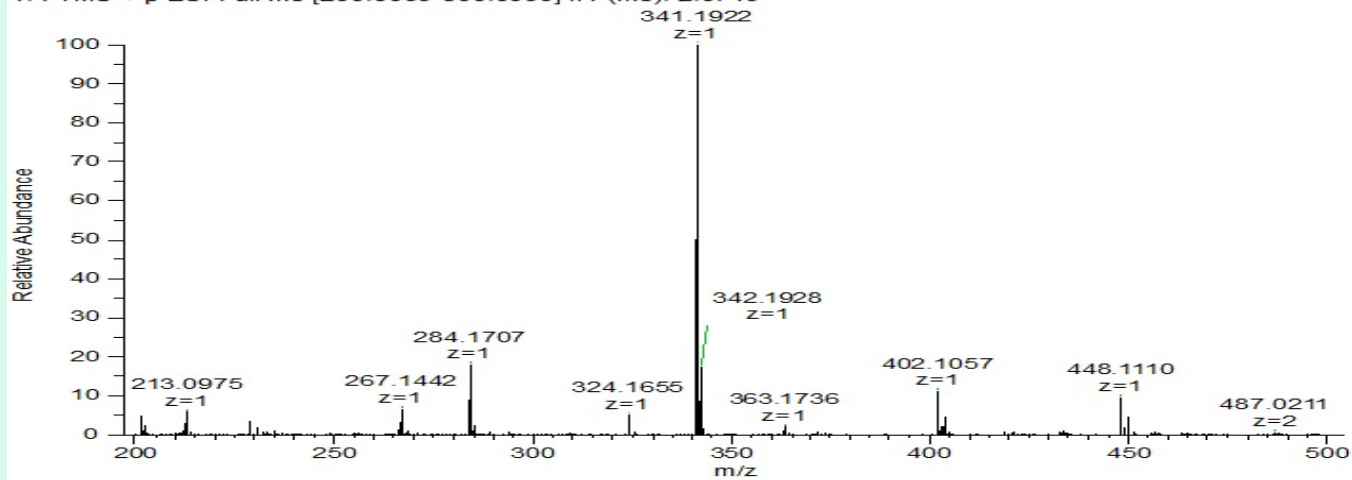
	Specification	Result	
Identity Test:	GHK-Cu	GHK-Cu	Conforms
Quantity:	50 mg ± 15%	55.43 mg	Conforms
Purity:	>99%	99.84%	Conforms

LC-MS Chromatogram: Retention Time and Peak Analysis



Full Scan Mass Spectrometry Analysis

NWP-KLOW-GHK-Cu-01 #64 RT: 0.45 AV: 1 NL: 5.08E8
T: FTMS + p ESI Full ms [200.0000-500.0000] IIT (ms): 2.0740



Analysis Performed by

Dr. Roberto Marin
Analytical Chemist
contact@bioregen.com

COA #11674
Security Key **NWPEPTIDES0**
bioregen.com/verify



Roberto Marin

Client: Northwest Peptides
support@northwestpeptides.com
www.northwestpeptides.com

Sample received: **12/15/25**
Analysis conducted: **12/29/25**

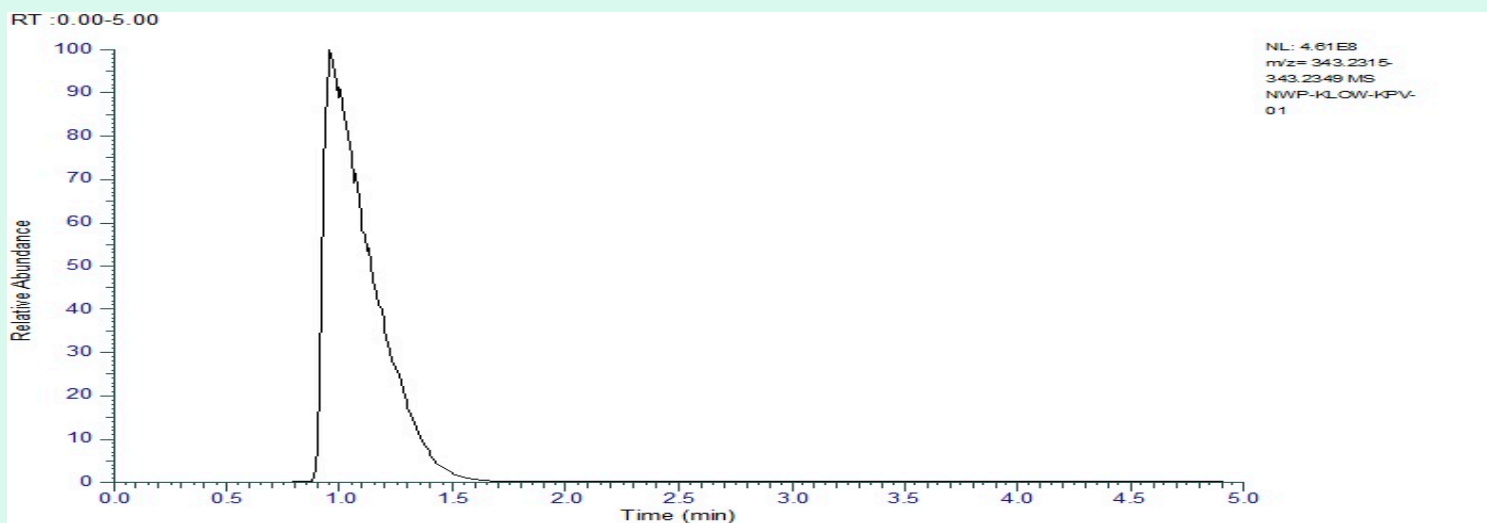
Compound:	KLOW Blend	CAS:	67727-97-3
Batch/Lot #:	KLOW-20251102	Formula:	C16H30N4O4
Appearance:	Blue lyophilized powder	Mol Wt:	342.43 g/mol

Method: by Ultra High Performance Liquid Chromatography with Mass Spectrometry with UV Detection

Pubchem CID: 125672
KPV | C16H30N4O4 | CID 125672

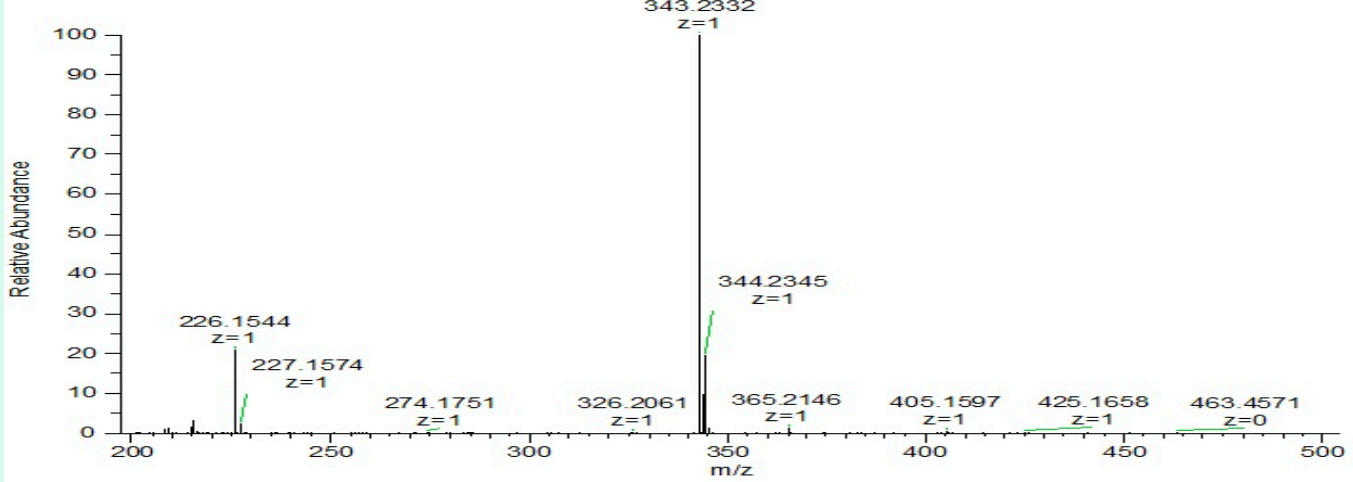
	Specification	Result	
Identity Test:	KPV	KPV	Conforms
Quantity:	10 mg ± 15%	9.51 mg	Conforms
Purity:	>99%	99.86%	Conforms

LC-MS Chromatogram: Retention Time and Peak Analysis



Full Scan Mass Spectrometry Analysis

NWP-KLOW-KPV-01 #111 RT: 0.96 AV: 1 NL: 4.44E8
T: FTMS + p ESI Full ms [200.0000-500.0000] IIT (ms): 1.0580



Analysis Performed by

Dr. Roberto Marin
Analytical Chemist
contact@bioregen.com

COA #11674
Security Key **NWPEPTIDES0**
bioregen.com/verify



Roberto Marin